



智能装卸属具 选购手册

DEMOLITION AND RECYCLING EQUIPMENT
EXCAVATOR GRAB

烟台金山重工机械设备有限公司

JISAN HEAVY INDUSTRY LTD.

地址：山东省烟台市福山区高新技术产业园区金凤路41号

官网：www.jisanbr.net 电话：86-0535-2132368

“

产品目录

PRODUCT LIST



加强型双油缸抓钢器

Hydraulic Steel Grab A

P01

双油缸抓齿，可以旋转。
Double-cylinder grabs the teeth and can rotate.



日式单油缸抓钢器

Hydraulic Steel Grab B

P02

单油缸抓齿，可以旋转。
Single cylinder grabs the teeth and can rotate.



普通机械抓钢器

Mechanical Grapple A

P03

安装需捆绑小臂。
The forearm needs to be tied for installation.



液压抓木/石/钢器

Hydraulic Log Grab

P05

双油缸抓齿，不伤木料可以旋转。
Double-cylinder grabs the teeth and can rotate without hurting the wood.



梅花抓

Orange Peel Grapple A

P06

全包油缸保护，可以旋转。
All-inclusive oil cylinder is protected and can be rotated.



莲花抓

Orange Peel Grapple B

P07

大容量抓取，可以旋转。
Large-capacity grabbing, can rotate.



连杆机械抓钢器

Mechanical Grapple B

P04

安装不伤小臂。
Installation does not hurt the forearm.



加强连杆机械抓钢器

Mechanical Grapple C

P04

安装不伤小臂，结构结实紧凑。
The installation does not damage the forearm, and the structure is strong and compact.



拆除分拣斗

Sorting Grab

P08

双油缸栅格斗，可以旋转。
The double-cylinder grid bucket can be rotated.



铲斗夹

Clamp Bucket

P09

单油缸铲斗抓齿，可以旋转。
Single-cylinder bucket grabs teeth and can rotate.



贝壳斗

Clamshell Bucket

P10

双油缸密封斗，可以旋转。
Double-cylinder sealed bucket can rotate.

2009年2月烟台金山重工机械设备有限公司成立。
In February 2009, Yantai Jisan Heavy Industry Ltd. was formally established.

2010年12月公司破碎锤销量突破600台，实现当年销售额3500万。
In December 2010, the company's sales of hydraulic breakers exceeded 600 units, achieving sales of 35 million in that year.

2011年3月金山重工DLK品牌第一台快速连接器下线，标志着金山重工多元化发展路线正式拉开帷幕。
2011年4月金山重工振动夯、抓木器等其他属具陆续下线。

In March 2011, the first hydraulic quick hitch of Jisan Heavy Industry DLK brand went offline, marking the official opening of the diversified development route of Jisan Heavy Industry. In April 2011, other accessories such as hydraulic plate compactor and hydraulic grapple of Jisan Heavy Industries were rolled off the production line.

2012年11月金山重工正式定位专业的挖掘机属具制造商，当年已经拥有110个以上类别，50多个型号的产品生产能力，为挖掘机属具行业不断研发制造新产品。

In November 2012, Jisan Heavy Industry officially positioned a professional excavator attachment manufacturer. In that year, it already had more than 110 categories and more than 50 models of production capacity. It continuously developed new products for the excavator attachment industry.

2013年5月陆续通过欧盟CE认证、CIMA资格认证、GOST-R认证。
2013年12月单次出口50万美元产品，得到国际客户好评。

In May 2013, it successively passed EU CE certification, CIMA qualification certification, and GOST-R certification. In December 2013, a single export of 500,000 US dollars of products was well received by international customers.

2014年9月金山重工正式投资破碎锤生产，定位生产140级以上大型破碎锤制造企业。
2014年9月金山重工正式投资破碎锤生产，定位生产140级以上大型破碎锤制造企业。

2015年12月金山重工165F、175F、185F系列加重型产品陆续投放市场。
2015年12月金山重工165F、175F、185F系列加重型产品陆续投放市场。

2016年金山重工六款系列液压剪相继下线，走出国门。金山重工占地86亩地的新工厂正式开工启动。

In 2016, Jisan Heavy Industries six series of hydraulic shears were rolled off the production line and went abroad. Jisan Heavy Industries officially opened a new factory covering an area of 13,000 square meters.

2017年金山重工不断更新产品性能，推出重型液压剪、鳄鱼式粉碎钳、新型抓钢器等产品。购置多台数控机床，扩大生产能力。

In 2017, Jisan Heavy Industry continuously updated its product performance, and introduced products such as hydraulic power shear, hydraulic pulverizer, and new steel grabbers. Jisan Heavy Industry purchased multiple CNC machine tools to expand production capacity.

2018年上海国际工程机械宝马展(BAUMA CHINA)订单销量翻一倍。成功研发报废汽车拆解机等大型机械设备。

In November 2018, the sales volume of BAUMA CHINA at Shanghai International Construction Machinery doubled. Successfully developed large machinery and equipment such as scrap car disassemblers.

2019年继续参加国内外的中国(北京)国际工程机械展展与技术交流会等各大会，扩大世界影响力。

In 2019, we have participated in the China (Beijing) International Construction Machinery Exhibition and Technology Exchange Conference (CICES) and other major exhibitions to expand the influence of the world.

”

发展历程

DEVELOPMENT PROCESS

2020年扩大生产能力，增加各类大型生产设备，提高拆车机、打桩机、重型液压剪等产品效能。

In 2020, we will expand production capacity, increase various types of large-scale production equipment, and improve the efficiency of car scrapers, pile drivers, and hydraulic power shears.

2021年研发单缸大力剪、双缸大力剪等各种新型液压剪设备。
2021年新建10000㎡厂房。

In 2021, we will develop various new hydraulic shears such as single-cylinder shears and double-cylinder shears. In 2021, a new 10,000 square meters workshop will be built.



公司介绍

COMPANY PROFILE

金山重工致力于自主研发、生产、销售挖掘机及各类配套作业装置的现代化制造企业。经过多年的发展公司拥有完善的技术研发团体和生产工艺，保证了产品的性能和质量。随着制造设备不断更新改造，确保了多达上百种大中小型号属具的生产供应。

公司主要生产：报废汽车拆解机、挖掘机、固定抓料机等大型机械设备及破碎锤、抓钢器、抓木器、液压剪、打桩机、连接器、莲花抓、振动夯、拆车钳等上百种挖掘机前端装置产品。下设金山、迪林科两个系列品牌。

公司秉承“效率至上、科技先行”的核心价值观，坚持技术创新和管理创新，全面推行卓越绩效管理和精益生产方式(LPS)，实现精准营销和品牌战略，综合运营效率持续提高。公司及产品先后通过ISO认证，高新技术企业认证，BV认证，SGS认证，CE认证，我们坚信质量是企业的生命，抓住质量源头，在生产方面严格控制自制件质量和制作工艺。

公司拥有自主进出口权，产品远销全球50多个国家和地区，在遍布全球的销售网络，无论您身在何处，金山重工全球的代理商经销商系统都可以为您提供一站式采购，多元化工程解决方案，金山完善的售后服务团队，解决了客户的后顾之忧。

公司持续推进国际化经营战略，不断加强国内外技术、管路、品牌运作方面的合作与交流，在产品布局、配套体系、人力资源和市场营销等领域逐步迈向国际化。

在未来，金山公司将充分利用多年来积累的丰富经验和形成的核心竞争优势，通过“精细化——多元化——国际化”这三大战略目标的实施来推进企业发展；全力打造一个专业的液压装备制造商，向着世界一流企业迈进！

Yantai Jisan Heavy Industry Ltd. is a modernized manufacture enterprise which is fully committed to research and development, production and sales all kinds of excavator attachments equipments. The main products include: Hydraulic breaker, Pile hammer, Hydraulic quick hitch, Hydraulic rotating grapple, Grab bucket, Plate compactor, Heavy duty ripper, Crusher, Earth auger, meanwhile also can customize special equipment according to customer's request, such as Pallet fork, Special thumbs, Tilt bucket, Tilt hitch etc.

The company has independent import and export rights. Products are sold all over the world. The company provides supporting and processing services for the domestic and foreign many excavator manufacturers to maximize meet customers' requirements.

Quality is the life of enterprise! Jisan company has intelligent technical team, perfect quality control system and service network; Grasp the quality source, in terms of production, strictly control of the homemade quality and production process. The company implemented 6S management, and continually improve the quality awareness of staff, combined with the assessment mechanism to supervise and inspect, and carry out quality one-votc veto to ensure product durability, reliability, fundamentally set up the concepts of Quality First.

In the future, Jisan Company will make full use of rich experience accumulated and the core competitive advantage formed in the past few years, to stride forward the world first-class enterprise.



莲花抓 (4/5抓)

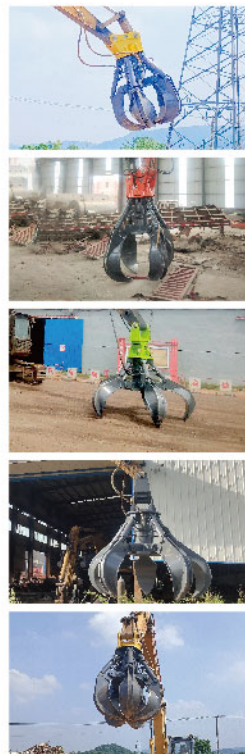
Orange Peel Grapple B

适用对象: 适用块状型散装物料装卸作业。

主要特点: 针对抓取量大, 生产生活垃圾, 废铁、废钢等大型块状固体废弃物料搬运作业。

Applicable objects: Suitable for bulk bulk material loading and unloading operations.

Main features: For the handling of large-scale solid waste materials such as large amounts of grasping, production and domestic garbage, scrap iron, scrap steel, etc.



项目/型号 Item/Model	单位 Unit	JS008BF	JS008BR	JS008BS	JS008BS-R
适配挖掘机 Suitable Excavator	ton	18-24	18-26	20-30	20-30
瓣数 No. of Jaw	piece	4/5	4/5	4/5	4/5
重量 Weight	kg	1700/1900	1900/2100	1800/2000	1900/2100
高度 Height	mm	2363	2580	2980	2580
宽度 Width	mm	1500	1500	1500	1500
开口 Opening	mm	2500	2500	2500	2500
驱动压力 Driving Pressure	bar	280	280	280	280
驱动流量 Driving Flow	lpm	220	220	220	220
容量 Capacity	m ³	1	1	1	1

注: F固定, R旋转, S摇摆, S-R单轴摇摆旋转 Note: F fixed, R rotation, S swing, S-R single-axis swing rotation

拆除分拣斗

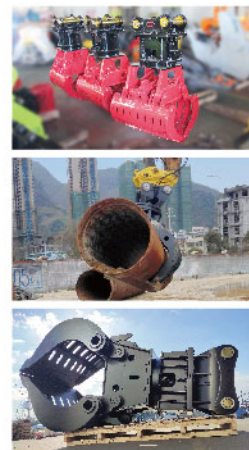
Sorting Grab

适用对象: 适用普通房屋拆迁, 废钢拆解, 木料、垃圾装卸作业。

主要特点: 针对简易砖混破拆, 各类散装、块状物料搬运作业。

Applicable object: It is suitable for ordinary house demolition, scrap steel dismantling, wood and garbage loading and unloading operations.

Main features: For simple brick-concrete demolition, various bulk and block material handling operations.



项目/型号 Item/Model	单位 Unit	JSG120	JSG160	JSG200	JSG300
适配挖掘机 Suitable Excavator	ton	10-18	18-25	25-35	35-55
重量 Weight	kg	1200	1570	2088	3000
高度 Height	mm	1585	2085	2200	2500
宽度 Width	mm	900	1080	1100	1300
开口 Opening	mm	1700	2000	2100	2500
驱动压力 Driving Pressure	bar	180	250	280	280
驱动流量 Driving Flow	lpm	100	160	220	220
抓宽度 Tine Width	mm	800	950	1100	1300